



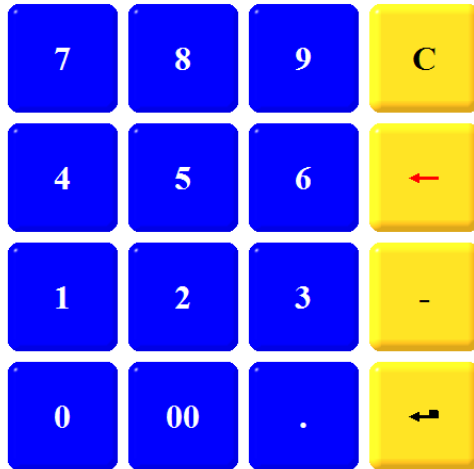
Authorized Dealer **VisionI Computers, Inc.**
(312)326-9188

Profitek RM System Version 7.4.2
Developed by InfoSpec Systems (604)248-2348
Licensed to: VisionI Computers, Inc.

Welcome to Profitek F & B System



Enter User ID



☂ Carry Out
☎ Phone In
🚚 Delivery
👤 Dine In
👤 Patio
☂ Drive Thru



EZ Wok
 Chinese Restaurant

CARRY OU

Profitek Dealer: Vision! Computers, Inc. - (312)326-9188

Exit

Open

Print Pymt

Instr

Transfer

Server

Floor Plan

Manager

Showlog

Language

Profitek RM System
WS 01 Admin Aug 27, 2008 12:39 AM Server: 127.0.0.1

Section Screen

☂ Carry Out
☎ Phone In
🚚 Delivery
👤 Dine In
👤 Patio
☂ Drive Thru

Exit
Open
Print Pymt
Instr
Transfer
Server
Floor Plan
Manager
Showlog
Language

EZ Wok
 Chinese Restaurant

PATIO

Profitek Dealer: Vision! Computers, Inc. - (312)326-9188

Profitek RM System | WS 01 | Admin | Aug 27, 2008 12:42 AM | Server: 127.0.0.1

Patio Section Screen

Section
EXCH
Line
Disc
DISC All
Func
Modi

Bill # 3

Disc
Server SC
Exit

QTY	Description	Amount
1	BBQ Pork	4.20
1	Fried Shrimp (6)	4.00
1	Vegetable Chow Mein	6.90
1	Pork Chow Mein	6.90

BBQ Pork Chow Mein (S)
Beef Chow Mein (S)
Chicken Chow Mein (S)
House Combo CM (S)
Pork Chow Mein (S)
Shrimp Chow Mein (S)
Vegetable Chow Mein (S)

\$5	\$10		
\$20	\$100		
Cash			
Credit Card			
Tips			
		\$ 25.00	✕

Description	Amount	Gratuity
Subtotal	22.00	
Discount	0.00	
Delivery Charge	0.00	
Tax	2.04	
Service Charge	0.00	
Total	24.04	
Paid	0.00	

Balance

24.04

✕ All
✕
REV

By: Admin	12:43AM		Subtotal 22.00	
			Discount 0.00	
			Tax 2.04	

Bill # 3

24.04

Appetizers				
Soup				
Egg Foo Young	Beef	Seafood	Side Orders	Family Dinners
Vegetable	Chicken	Cantonese Style Chow	Soda or Pop	
		Favorites		Condiments

Payment Screen

Section	EXCH	Line	Disc	DISC All	Func	Modi	\$5	\$10	\$100	Exact \$	Pymt	Exit
QTY	Description		Amount									
1	BBQ Pork		4.20									
1	Fried Shrimp (6)		4.00									
1	Vegetable Chow Mein		6.90									
1	Pork Chow Mein		6.90									

Void Bill	Promo Bill	Combine Bill	Section
Instruction	Tax Exempt	Number Of Guest	Gift Card Inquiry
Customer Info	Last Round	Guest Type	Copy Bill
Last Cust Order	Resend	Delay	Meal Deal
Room Inquiry	Reprint Last Bill	House SC	Frequent Diner
Void Item	Item Discount	Item Tax Exempt	Retlearn
Promo Item	Item Exchange	Override Price	Item Memo
Open Drawer	Toggle Language	Toggle Description	Keyboard

By: Admin	12:43AM	
	Subtotal	22.00
	Discount	0.00
	Tax	2.04

Bill # 3	24.04
----------	--------------

	Next	Cancel
--	------	--------

Function Screen

Carry Out Phone In Delivery Dine In Patio Drive Thru

Exit

Open

Print Pymt

Instr

Transfer

Server

Floor Plan

Manager

Shadow

Language

Customer Info

Area Code	Phone #	Extension		
<input type="text" value="312"/>	<input type="text" value="555-1212"/>	<input type="text"/>	<input type="button" value="Add New"/>	<input type="button" value="Find"/>
			<input type="button" value="Cancel"/>	<input type="button" value="OK"/>
Last Name	First Name	Company Name	Card Number	Expiry Date
<input type="text" value="Kim"/>	<input type="text" value="James"/>	<input type="text"/>	<input type="text"/>	<input type="text"/>
Suite #	Street #	Street Name	Street Type	Buzzer
<input type="text" value="233"/>	<input type="text" value="22"/>	<input type="text" value="Canal"/>	<input type="text" value="St"/>	<input type="text"/>
		<input type="checkbox"/> Use This Card With CCA		E-Mail
		<input type="text"/>		
City	Province	Country	Postal Code	<input type="button" value="Map Code"/>
<input type="text" value="Oak Lawn"/>	<input type="text"/>	<input type="text" value="USA"/>	<input type="text"/>	Note
		<input checked="" type="checkbox"/> Print Note On Receipt		<input type="checkbox"/> Print Note In Kitchen
Map Code	Zone	Mileage	<input checked="" type="checkbox"/> Apply Delivery Charge	
<input type="text" value="LOCAL"/>	<input type="text" value="A1"/>	<input type="text" value="0"/>	<input type="button" value="Warnings"/>	
<hr/>				
First Visit	<input type="text" value="Jun 18, 2008"/>	Credit Amount	<input type="text" value="0.00"/>	<input type="button" value="+"/>
Last Visit	<input type="text" value="Jul 23, 2008"/>			

Q	W	E	R	T	Y	U	I	O	P	7	8	9
A	S	D	F	G	H	J	K	L	<	4	5	6
Z	X	C	V	B	N	M	,	.		1	2	3
<input type="button" value="Close"/>										<input type="button" value="Space"/>		<input type="button" value="@"/>
										<input type="button" value="0"/>	<input type="button" value="Enter"/>	

Profitek Des

WS 01 Admin Aug 27, 2008 12:54 AM Server: 127.0.0.1

Customer Info Screen

Carry Out Phone In Delivery Dine In Patio Drive Thru

Exit

Open

Print Pymt

Instr

Transfer

Server

Floor Plan

Manager

Showlog

Language

Customer Order History

Bill #	Amount	Time	Section
707909	13.91	Jul 23, 2008	Delivery
707906	16.72	Jul 14, 2008	Phone In
707905	9.18	Jul 14, 2008	Phone In
707891	11.91	Jul 14, 2008	Phone In
707792	13.91	Jul 14, 2008	Delivery
707759	13.64	Jul 14, 2008	Delivery
707693	39.20	Jul 14, 2008	Delivery
285753	14.63	Jun 21, 2008	Delivery
241529	12.35	Jun 21, 2008	Phone In
121069	12.13	Jun 20, 2008	Phone In

Repeat

Cancel

QTY	Item	Amount
1	BBQ Pork	4.20
1	Vegetable Fried Noodles	6.90

EZ Wok
Chinese Restaurant

PHONE IN

Profitek Dealer: Vision! Computers, Inc. - (312)326-9188

Profitek RM System W5 01 Admin Aug 27, 2008 12:55 AM Server: 127.0.0.1

Customer Order History Screen

Profitek RM System: Visionl Computers, Inc. - [Item]

File Item Employee Scheduling Customer Inventory Report Table Housekeeping Help

Code: 2600040 Entry Date:

Description 1: Orange Chicken (Lunch) Status: Active

Description 2: (午) 陈皮鸡 Batch #:

Description 3:

Subcategory: 260 Qty Available / Day: 0.00

Lunch Specials:

Item Type: Normal Required Item:

Buttons: Combo Sizes

Print To: Kitchen >>

Send To Monitor: 1 2 3 4 5
 6 7 8 9

Discountable Fractional Qty.
 Tax Exemptable Select Size
 Service Charge Exempt
 Add to Auto Menu Generation
 Track Inventory Vendor & Stock

Price

Zero Price (For Open Price: Leave it unchecked and set all the prices to 0)

Price 1	Price 2	Price 3	Price 4	Price 5
4.45	4.45	4.45	0.00	0.00
Price 6	Price 7	Price 8	Price 9	Price 10
0.00	0.00	0.00	0.00	0.00
Min. Price	0.00	Cost	0.00	Cost %
				0.00

Qty Count For Tax Exempt

GST: 0.00 PST: 0.00

LQT: 0.00

Buttons: < < > >| Picture Memo Barcode Modifier Link Item Save

Ready WS01 Admin Aug 27, 2008 01:05 AM SQL:127.0.0.1

Menu Item Entry Screen - Back Office

powered by crystal

Sales Summary Report

Transaction Date: Jul 23, 2008 to Jul 23, 2008

Visionl Computers, Inc.

	Qty	Amount	Net Amt.
Sales			
Food			
Appetizers	12.00	\$35.45	\$35.45
Fried Rice	1.00	\$5.90	\$5.90
Chop Suey	4.00	\$24.95	\$24.95
Chow Mein	6.00	\$41.90	\$41.90
Lo Mein	3.00	\$21.70	\$21.70
Chow Fun	1.00	\$7.40	\$7.40
Lunch Specials	1.00	\$4.20	\$4.20
House Special	2.00	\$21.00	\$21.00
	30.00	\$162.50	\$162.50
Total Sales	30.00	\$162.50	\$162.50
GST	12.00		\$15.04
Delivery Charge	4.00		\$8.00
Accounted For			\$185.54
Tender Breakdown			
	Qty	Foreign Amt.	POS Amt.
Credit Card	12.00		\$258.00
No Change	12.00		(\$72.46)
Tender Total	24.00		\$185.54
GST Taxable Total			\$162.50
Check Count / Average	12.00		\$15.46

Sales Summary Report Screen – Back Office

Profitek RM System: Visionl Computers, Inc. - [Item]

File Item Employee Scheduling Customer Inventory Report Table Housekeeping Help

Code: [] Description 1: [] Description 2: [] Description 3: [] Subcategory: [] Item Type: Normal

Price: Zero Price (For Open Price: Leave it unchecked and s)

Price 1: [] Price 2: [] Price 3: [] Price 6: [] Price 7: [] Price 8: [] Min. Price: [] Cost: []

Print To: [] Send To Monitor: 1 2 3 4 5 6 7 8 9

Discountable Fractional Qty. Tax Exemptable Select Size Service Charge Exempt Add to Auto Menu Generation Track Inventory **Vendor & Stock**

Qty Count For Tax Exempt: GST [] PST [] LQT []

WS01 Admin Aug 27, 2008 01:06 AM SQL:127.0.0.1

Point of Sale

- Touch Screen Based Order Entry
 - Designed especially for touch screen operations. Large colorful display. Virtually unlimited number of items; items are selected from the top group of buttons, grouped by subcategory selected at the bottom.
- Barcode Based Order Entry
 - Ability to scan UPC barcode information. Especially useful for prepackaged goods in quick service or for quick payment in cashier based restaurants.
- Handheld Wireless Order entry
 - Windows CE Based interface available for PDA's; allows server to enter and send orders to the kitchen, request bill status, and with optional CCA and wireless printer, process payments and issue receipts.
- Self Serve Kiosk Order Entry Option
 - Intuitive self serve interface for Kiosks replaces ticket takers at hotel or event functions and supplements cashiers during peak periods. PC based system means Kiosk may be used to sell advertising or provide information when not in Order Entry mode.
- Fast Order Card Scanning
 - Use a pre-printed order card listing menu items for customers to mark. The card is then scanned into order entry and the order completed within a couple of seconds. Especially useful for Dim Sum service or any environment with large numbers of small a la carte orders.
- Dine In Order Type Support
 - Table selection with guest count tracking and separate billing selectable.
- Drag and Drop Table Layout
 - You can design your on-screen table layout similar to your restaurant physical layout. Add or delete tables and easily re- arrange your layout depending on your shift or for special functions.
- Table Management Support
 - View which tables are yours, which are active with other servers, order status, payment status, and table split status directly from table layout screen.
 - Floor plan refreshes so hosts and servers always have up to date status.

- Section Management
 - Completely define the operation of your different sections (eg. Lounge, Bar, Patio, Dining Room).
 - Each section can have individual menus, table layouts, seating options.
 - Shadow tables for lounge/holding areas.
 - Tabs for bar only patrons
 - Quick service setup for take-out and delivery.
 - Profit centers may be set up for different sections or combinations of sections.

- Server Banking or Cashier Banking
 - Allow each employee be their own cashier, reconcile moneys owed at the end of their shift.
 - Easy to use shift end report.
 - All money collected by the employee is accounted for.

- Remote kitchen (order prep) & bar printer support
 - Unlimited number of kitchen and bar printers in any combination. Assign each item to any combination of order printers.
 - Optional Kitchen Monitor function with "bump bars" or "bump when paid".

- Price groups for Menu Item Pricing
 - Allow you to specify up to 10 different menu item prices for different sections or events, or for different regions in the case of chains.

- Popup Modifier Screens
 - Modifiers automatically pop up when the menu item is touched. Modifier grouping allows unlimited layers to be generated. Open modifier function to type in special requests "on the fly".

- Discounts, Voids, Promotions
 - Discounts definable by percentage or dollar amount.
 - Discount, void or promo an item or the whole order, with reasons.
 - Management controlled access to these functions, with a full audit trail.
 - Server Contest items with real time look-up promotes add on sales.

- Item Out Warning
 - Instantly enter change the availability status of an item has run out and can't be ordered.

- Customer tracking
 - Mandatory or optional entry of customer information. Function button for entry after order taken.
 - Management definable customer groups.
 - Customer lists by group and spending reports by group.

- Quick Order Functions
 - Large, convenient quantity buttons for multiples of items.
 - Combo Items with or without substitutions.
 - Meal Deals.
 - Repeat last round function.

- Hold and Line Functions
 - Line function shows kitchen breaks between appetizers and main course.
 - Hold function records order but does not send to kitchen until server requests.
 - Hold and fire by item or group of items selectable in 5 minute intervals (delayed order).
 - Special instructions pop up screen for server to tell kitchen: how long to hold, "make to go", rush etc.

- Take Out and Delivery Functions
 - Multi - line caller ID.
 - Automatic delivery charge (optional).
 - Pop up order history for each customer.
 - Previous order repeat.
 - Map codes may be entered for each customer.
 - Driver dispatch, delivery time, compensation and mileage tracking.

- Built-in Employee Clock In/Out
 - Automatic clock in at login (if selected)
 - Pop up clock out reminder, Reminds again at clock in if missed.
 - Mandatory clock in can be selected for specific employees.
 - Manager approval required if over maximum shift.
 - Work hours can be verified and adjusted by manager.

- Payment Functionality
 - Unlimited user definable payment types
 - Automatic foreign exchange calculation with user definable rates.
 - Quick cash and exact change buttons.
 - Suggested Service Charge (tip calculation). Forced SC selectable for groups.

- [Frequent Diner \(Optional Module\)](#)
 - Track and reward regular or VIP customers.
 - Set-up items with bonus points.
 - Set-up items exempt from awards or redemption
 - Manage direct mail campaigns

- [Gift Card \(Optional module\)](#)
 - Issue and redeem gift cards for a single store or across a chain.
 - Cards may be refilled at any store.

- Delete lost or stolen cards
- Reissue returned cards
- [Accounts Receivable Declining Balance \(Optional Module\)](#)
 - Define customer AR terms, maximum credit, maximum daily, weekly and monthly spending.
 - Use prepaid Magnetic Card with Declining Balance (Institutions and Schools)
 - Set menu restrictions for customers with special dietary requirements.
 - Set purchase/usage restrictions by locations or sections.
- [Optional Integrated CCA Module \(US AND Canada\)](#)
 - Provides integrated credit card sale transaction processing directly from within Profitek to Global Payments or Moneris in Canada; and through PC Charge Payment Server in the US.
 - Canadian debit card processing.
 - Performs Pre-Authorization & Post-Authorization to handle tips more effectively.
 - Handles Refunds and Voids.
- Hotel Front Desk Integration (Optional Module)
 - Optional module allows Profitek to Interface with most popular Hotel Management Systems to allow room charges.
- Training Mode
 - Training Mode for new employees does not affect operational database.
 - Update training database to current database with one touch.

Management Features

- Basic Management Features
 - Easy to use, Menu Driven Back Office setup, activities, and maintenance screens.
 - Crystal reports for clear, accurate and exportable report functions.
 - Special quick edit functions for items and modifiers.
 - Critical daily management features accessible from the Order Entry screens (password protected).
- Menu Maintenance
 - Drag and drop menu creation and maintenance.
 - Create menus in advance and activate on a preset date/time.
 - Auto generate and duplicate menus for modification.
 - Set-up Event Menus or Event prices as part of an existing Menu (e.g. Happy Hour or daily specials)
- Item Maintenance

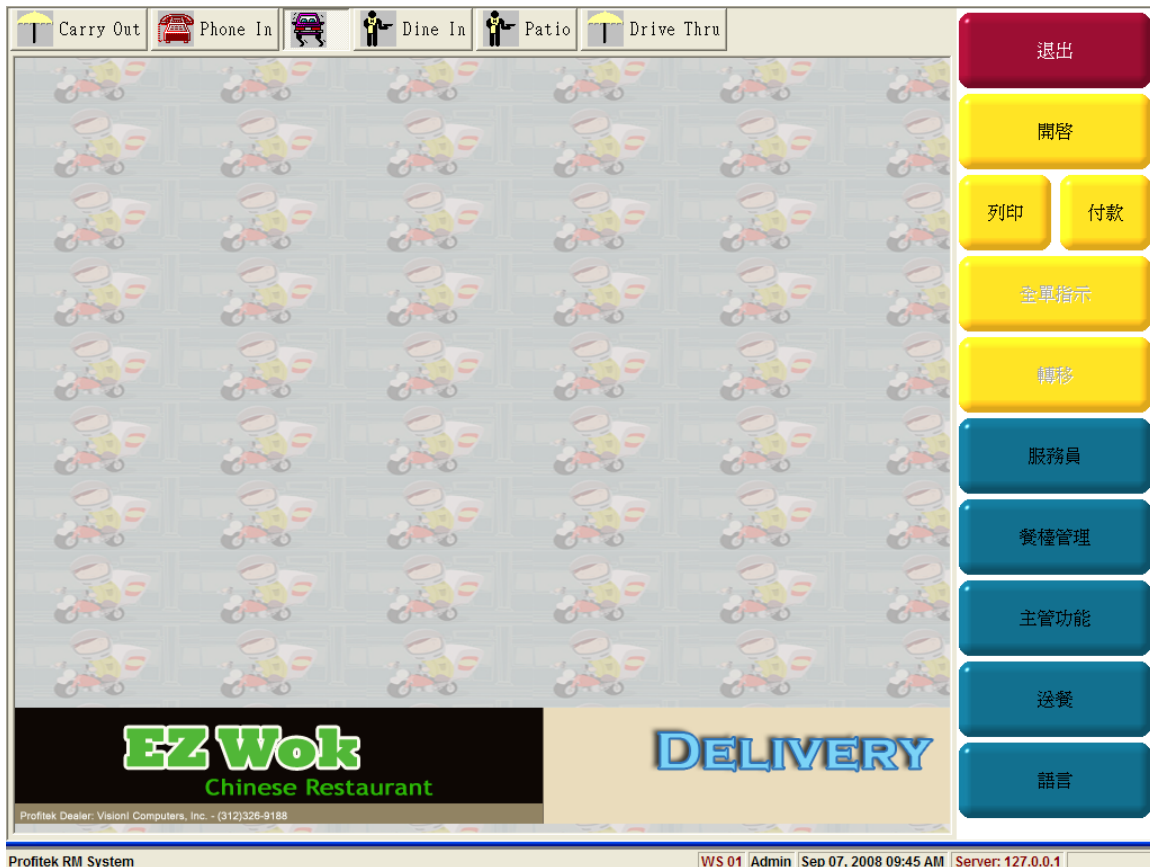
- Ten price groups including special event prices
 - Open price for Special order or live seafood (minimum price may be assigned)
 - Price by weight (with scale interface) .
 - Size pricing, fractional Quantities allowed
 - Set daily quantities available to prevent ordering of items that have sold out.
 - Set item for inventory tracking
 - Create Combo Items with or without substitutions
 - Create linked items.
 - Create "Meal Deals" with mandatory items and batch links
 - Time Charge Items (Priced by hour or intervals for room rentals).
- Item Modifiers
 - Group modifiers and link to individual items or groups of items.
 - Set Min/Max selection for modifier groups
 - Modifier prefixes (More, Less, Extra etc.)
- Basic Inventory Capability (for Piece by Piece items)
 - Enter and adjust quantities for critical menu items like steaks, bottled beer or wine.
 - Check quantities at day-end or at next delivery to see if on-hand quantity matches physical count.
 - Automatic depletion of item quantities at daily close.
 - Receiving by vendor for new stock.
- Optional [Ingredient and Recipe Management Module](#)
 - Optional module for full menu explosion and inventory control.
 - Optional Purchase Order module.
 - Also integrates with major third party inventory programs (FoodTrack & Optimum Control).
- Audit Trails
 - Assign items for tracking for who has served and in what quantity (contests and Promotions)
 - Track bill adjustments including, voids, promos, negative quantities, zero prices or negative price, by server, or reason code.
 - Management may select which functions will be tracked and logged; reporting by employee or function access.
- Employee Scheduling and Maintenance
 - Set up Employee groups (server, bartender etc.) with appropriate access privileges.
 - Set up Departments, each with its own pay rates.
 - Employee Scheduling by Department.

- Employee work hours maintenance and adjustment to correct errors in clock in or clock out.
- Print Schedules by employee or department, with or without labour costs (emailable).
- Integrates with Optional Profitek Canadian Payroll Module or ADP.
- Built-In Reports (Selectable by date range)
 - Sales Summary Report
 - Item Sales Report
 - Sales Report by Section, Revenue Center, Employee
 - Hourly Sales Report
 - Category Sales Report by Day
 - Shift Statistic Report by Day
 - Tender Report
 - Tender Report by Day
 - Expense Report by Day
 - Discount Report by Day
 - Inventory Movement Report
 - Bill Audit List
 - Adjustment List
 - Modifier Report
 - Customer Type Statistic Report
 - Gross Profit Report
 - Sales Audit Report
 - Tender Statistic Report
 - Air Miles Report (with Optional Module)
 - Track Item Report
 - Work hours Report
 - Function Access Log
 - Price Change Log.
- Optional [Multi Location Management Module](#)
 - Control Menu Items and Prices centrally.
 - Produce consolidated sales reports.
- Accounting
 - Optional Accounting Interface exports sales information to the G/L of QuickBooks, ACCPAC, Simply Accounting or Great Plains, or;
 - Optional [Profitek G/L, A/P and Canadian Payroll modules](#) integrate seamlessly with Profitek Restaurant Management.

Multilingual Capabilities

- Multilingual POS & Back Office

- Displays and Prints (with appropriate printer) any three languages supported by Windows (e.g. English, French, Chinese, Spanish, Indonesian, Korean, Vietnamese, Japanese etc.)
 - All screen interfaces from the POS to the Back Office could display in any of the supported languages.
 - User Programmable Primary & secondary menu item & menu modifier names.
- Language Toggle
 - Order entry screen allows language to be changed at any time without affecting the order process.
- Printers
 - Order Printing in either language.
 - Invoice printing in either or both languages.
 - Chinese character order monitor supported.
- Auto Language Recognition
 - Individual server defaults allow Profitek to open to the user's preferred language on login.



餐房區域
更換
劃線
折扣
全部折扣
功能
改餐
\$5
\$10
\$100
不找錢
付款
退出

數量	名稱	金額
1	瓜菜撈面	6.90
1	猪肉撈面	6.90
1	虾唐装面	7.90
1	(小) 本樓撈面	4.95

(小) 叉燒唐装面	叉燒唐装面
(小) 牛肉唐装面	牛肉唐装面
(小) 鸡炒唐装面	鸡炒唐装面
(小) 本樓撈面	本樓撈面
(小) 猪肉唐装面	猪肉唐装面
(小) 瓜菜唐装面	虾唐装面
(小) 虾唐装面	瓜菜唐装面

- 2x
- 3x
- 4x
- 5x
- 6x
- 7x
- 8x
- 9x
- 10x

所有
反選

由: Admin 09:46AM

稅前總額	26.65
折扣	0.00
稅項	2.47

帳單號碼 8

29.12

Appetizers	Pork	Chop Suey	Lo Mein	House Special
Soup	Fried Rice	Chow Mein	Chow Fun	Lunch Specials
Egg Foo Young	Beef	Seafood	Side Orders	Family Dinners
Vegetable	Chicken	Cantonese Style Chow	Soda or Pop	
		Favorites		Condiments

Bill 4**Carry Out****12:48AM**Kitchen, S1,
Bill: 4Aug 27
Admin

1 **Fried Shrimp (6)**
炸虾 (6)

1 **Fried Won Ton (10)**
炸馄饨(10)

1 **Shrimp Chow Mein**
虾炒面

1 **House Combo CM**
本楼炒面

1 **Chicken Chow Mein (S)**
(小) 鸡炒面

Add Beef
加牛肉

1 **Mongolian Beef**
蒙古牛

Kitchen Receipt

Phone In
312-555-1212
Kim, James

Visionl Computers, Inc.
2416 S. Canal Street
Chicago,IL 60616
Phone(312)326-9188

Date: Aug 27, 2008 Time: 01:00AM

Server: Admin

Bill: 0005

Table : Kim

1	BBQ Pork	4.20
1	Shrimp Chop Suey (S)	4.75
1	Shrimp Chop Suey	7.40
1	H. K. Style Chow Fun	7.90
1	Sesame Chicken	7.95
	+ Spicy	
1	Egg Roll	1.25
1	Dinner for Two	21.95
1	Egg Drop Soup (S)	
1	Egg Rolls (2)	
1	Crab Rangoon (2)	
1	Mongolian Beef	
1	Sweet Sour Chicken	
1	House Combo F.R.	
1	White Rice	

Subtotal 55.40

GST 5.12

Total 60.52

Open Time : Aug 27, 2008 12:55AM

Customer Receipt